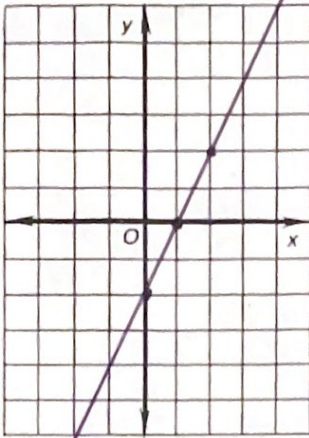


## Function Sketching Worksheet Math 9

Complete a table of value of 3 points (make sure you use whole number points) and then sketch the function.

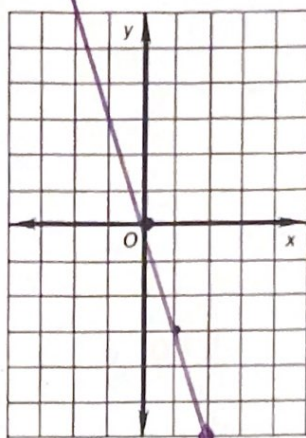
a)  $y = 2x - 2$

x	y
0	-2
1	0
2	2



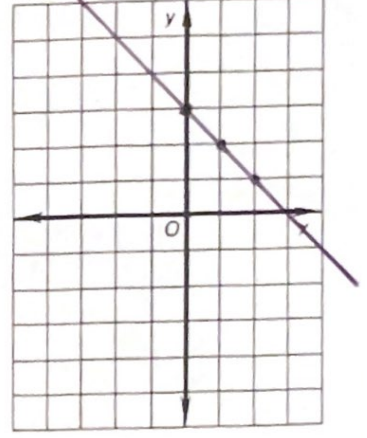
b)  $y = -3x$

x	y
0	0
1	-3
2	-6



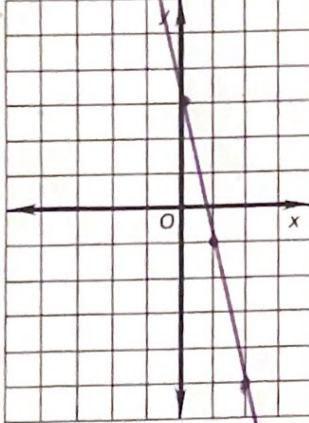
c)  $y = -x + 3$

x	y
0	3
1	2
2	1



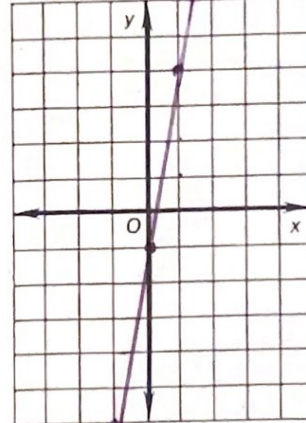
d)  $y = -4x + 3$

x	y
0	3
1	-1
2	-5



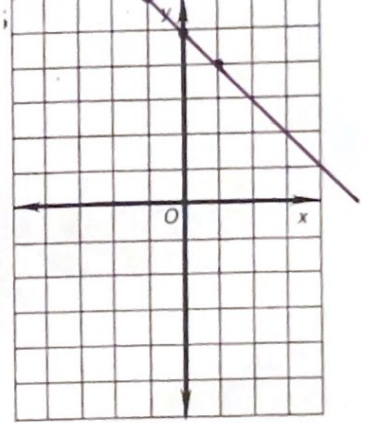
e)  $y = 5x - 1$

x	y
-1	-6
0	-1
1	4



f)  $-x + y = 5$   
 $-x$     $-x$

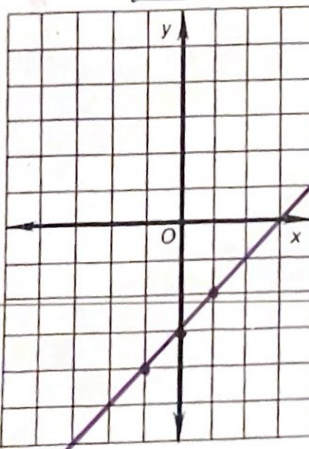
x	y
-1	6
0	5
1	4



g)  $x - y = 3$

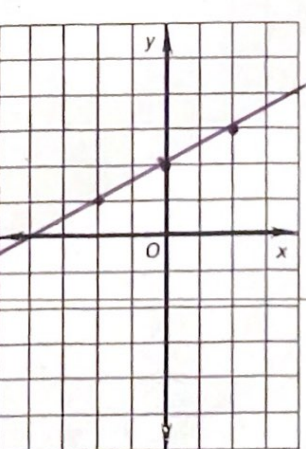
$y = x - 3$

x	y
-1	-4
0	-3
1	-2



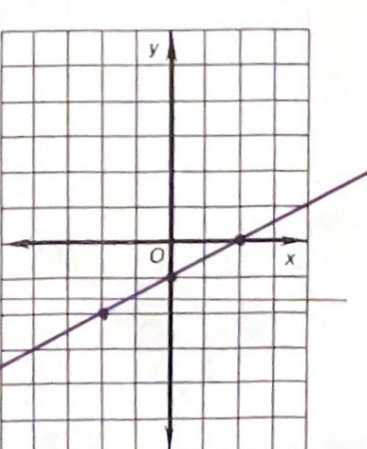
h)  $y = \frac{1}{2}x + 2$

x	y
-2	1
0	2
2	3

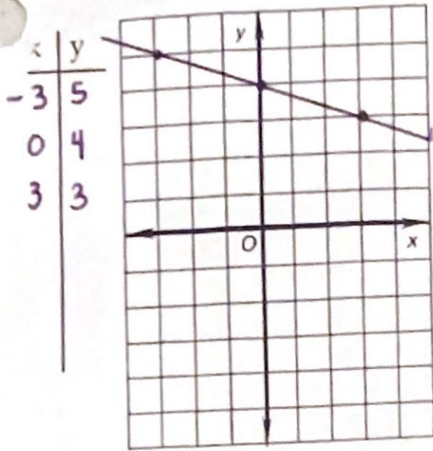


i)  $y = \frac{1}{2}x - 1$

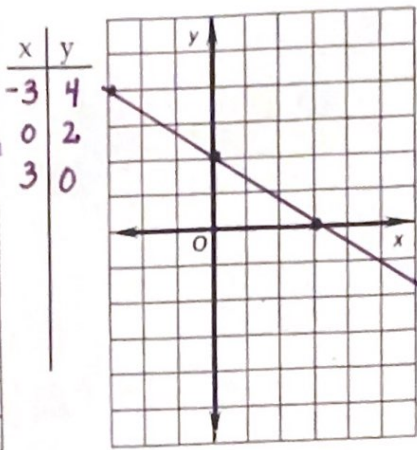
x	y
-2	-2
0	-1
2	0



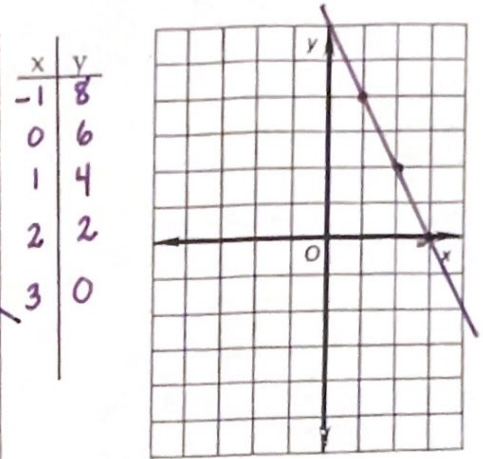
j)  $y = \frac{-x+4}{3}$



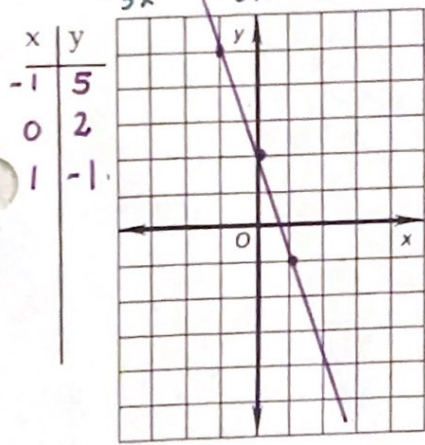
k)  $y = \frac{-2x+2}{3}$



l)  $y = -2x + 6$

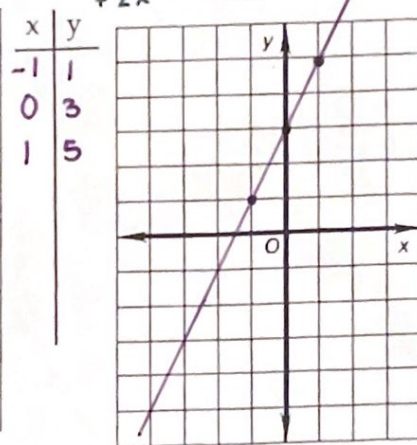


m)  $3x + y = 2$   
 $-3x$



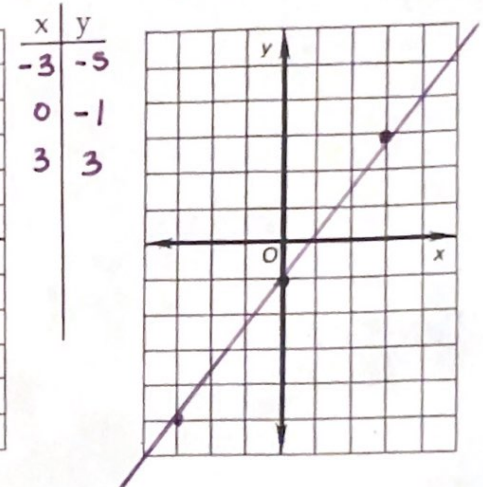
$y = -3x + 2$   
 $y = 2 - 3x$

n)  $-2x + y = 3$   
 $+2x$



$y = 3 + 2x$

$y = \frac{4x-1}{3}$



Extend your skills and strive for excellence.....Up for a challenge???

2) Sketch the following using at least 2 whole number points (you can use the same axis for both)

a)  $3x - 2y = 6$

$-2y = 6 - 3x$

$y = -3 + \frac{3x}{2}$

x	y
-2	-6
0	-3
2	0

b)  $4x - 3y = 12$

$-3y = 12 - 4x$

$y = -4 + \frac{4x}{3}$

x	y
-3	-8
0	-4
3	0

